

Optimizing Mesenchymal Stromal Cells Delivery: Present Status and New Frontiers in Regenerative Medicine

Jayeeta Giri^{*}

Molecular and Cellular Biology Laboratory, ICMR-National Institute for Research in Reproductive and child Health, Indian Council of Medical Research (ICMR), JM Street, Parel, Mumbai, 400012, India

^{*}**Corresponding Author:** Jayeeta Giri, Molecular and Cellular Biology Laboratory, ICMR-National Institute for Research in Reproductive and child Health, Indian Council of Medical Research (ICMR), JM Street, Parel, Mumbai, 400012, India, E-mail: jgiri.stem@gmail.com

Received Date: April 28, 2024 **Accepted Date:** May 28, 2024 **Published Date:** May 30, 2024

Citation: Jayeeta Giri (2024) Optimizing Mesenchymal Stromal Cells Delivery: Present Status and New Frontiers in Regenerative Medicine. J Stem Cell Rep 6: 1-16

Abstract

Mesenchymal stromal cells (MSCs) have recently risen to prominence in regenerative medicine for their powerful intrinsic properties of self-regeneration, immunomodulation, and multi-potency. They exhibit an excellent safety profile in early-phase clinical trials. Nevertheless, MSCs-based therapy suffers reduced efficacy in randomized clinical trials due to a poor understanding of their proper delivery modalities. MSCs therapeutic effect mediates by paracrine and contact factors, which are cells' intrinsic physiological processes. The cell culture expansion process does not destroy MSCs' intrinsic properties. *In vivo* persistence of administered MSCs determines their therapeutic potency. Cell viability, fitness, immune match, and delivery route meticulously regulate their *in vivo* persistency. Different genetic or chemical modification strategies are currently applied to extend their *in vivo* lifespan and boost their pharmaceutical effect. Improving the *in vivo* persistence of implanted MSCs could facilitate its clinical translation. Here, we intend to explore the current application of MSCs after tissue injuries. We specifically focus on tissue source, delivery routes, metabolic fitness, and cell dose. We further discuss potential approaches to optimize *in vivo* engraftment.

Keywords: Mesenchymal Stromal Cells; Route of Delivery; Dose; Immunogenicity; Metabolic Fitness; Potency Assay

Introduction

Mesenchymal stromal cells (MSCs) show great promise as a biological therapeutic for numerous inflammatory and autoimmune ailments owing to their unique immunoregulatory and regenerative properties [1]. Culture-adopted MSCs secrete a wide range of small molecules, peptides, chemokines, cytokines, and morphogens, collectively

named secretomes. Host immune cells reciprocally interact with secretomes to modulate the intensity of immune response at the tissue injury site [2]. Besides the immunomodulatory and regenerative capacities, the unique tumor-homing property makes them an ideal candidate for carrying anti-cancer agents, for which they can participate in the resistance to various anti-cancer drugs (Table 1).

Table 1: MSCs' role in regenerative medicine

MSCs functionality	Therapeutic outcome
Immunomodulatory	Reduce tissue inflammation during Crohn's disease [8-12] Resolving acute steroid-refractory graft vs. host disease [13,14]. Effective therapeutic approach for multiple sclerosis patients [15-17].
Angiogenic/vascular regeneration	Vascular regeneration in ischemic murine skin [18,19]. Angiogenesis in myocardial infarction [20,21].
Anti-cancer drug delivery agent	Deliver chemotherapeutic agent Docetaxel (DTX) to lung tumors [22], Doxorubicin (DOX) to Colorectal cancer [23], Gemcitabine to pancreatic cancer [24]
Tissue healing	MSCs multipotent differentiation capacity facilitates regeneration of ovary in cyclophosphamide (CTX)-induced ovarian failure [25] Regeneration of skin in mouse and human chronic wound [26]

MSCs were first clinically explored as a cellular therapeutic in 1995 by Hillard Lazarus to accelerate hematopoietic recovery in human subjects [3]. Since then, multiple clinical and preclinical studies have diligently tried to establish MSCs as a biopharmaceutical for several diseases. Despite the advancements of MSCs research over time, most of these MSC-based trials are still in early phase I or II, whereas only a few portions of them (less than 50) are in phase III, and currently, only nine products (approximately 1%) have been permitted worldwide for market authorization [4]. To date, the European Medicines Agency approved only one MSCs-based product as a living cell pharmaceutical against perianal fistulas, and the US Food and Drug Administration has not yet approved any MSCs-related product [5].

Despite the failure of clinical trials to meet primary efficacy endpoints, numerous preclinical animal tests identified the promising outcome of MSCs adoptive transfer in several mouse disease models. Cell drug deployment variables in human clinical trials are the primary hurdle that impedes the direct translation of MSCs' effect on

murine outcomes to the clinical situation [6]. The major hurdles of MSCs' clinical application are variability in tissue source, culture methods and handling at the time of application (PMID: 29859173). Ageing plays a significant role in reduction of the therapeutic effects of MSCs. This effect is prominent in case of autologous MSCs' transplantation in elderly individuals (PMID: 37464416). Additionally, studies identified that MSCs' multi-lineage differentiation capacity also varies with changing tissue sources. For example, bone marrow derived MSCs showed higher osteogenic and lesser adipogenic differentiation potentials compared to adipose tissue-derived MSCs (PMID: 29208029). Other than the tissue source the mode of application is also a determining factor for MSCs' altered therapeutic effect. Studies demonstrated that replication fit MSCs delivered subcutaneously or intraperitoneally show maximal pharmaceutical potency in colitis mice model (PMID: 32384543). Though it is not decisive that MSCs engraftment and differentiation convey their *in vivo* paracrine support, recent studies evidenced the correlation between MSCs *in vivo* persistence and clinical potency [5,7]. Parameters that control the stable *in vivo* engraftment of implanted MSCs are the route of delivery, im-

mune compatibility, dosing, and fitness of culture-adapted MSCs [5,7]. Hence the primary target of future MSCs-based research should be on exploring engineering or priming approaches to modulate cell drug deployment strategy for inducing graft cell survival. In this review, we reappraise different MSCs' delivery strategies so far applied in clinical and preclinical situations and discuss some future directions for the clinical translation of this therapeutic intervention to promote MSCs' clinical application.

Cell Processing and Mode of Delivery: Current Status and Translational Hurdles

To develop MSCs based therapy in human clinical trials, it is pivotal to understand the feasibility and safety of their current therapeutic modality. A complete understanding of cell manufacturing variables like processing, fitness, and functionality along with non-manufacturing variables like handling at the point of care, route of delivery, dosing of MSCs will aid in the appropriate and safe use of the cells for clinical therapy.

Mscs' Tissue Source

Mesenchymal stromal cells MSCs can be isolated from multiple organ and tissue sources such as bone marrow, umbilical cord, adipose tissue, placenta, peripheral

blood, periodontal ligament, amniotic fluid [27]. Of these, bone marrow-derived MSCs are the most regularly tested tissue source in clinical trials. MSCs isolated from different tissue sources have been well characterized by the presence of common surface antigen such as expression of CD105, CD73, and CD90, and lack of CD45, CD34, CD14 or CD11b, CD79 α or CD19 and HLA-DR [28]. MSCs derived from distinct sources possess similar multipotential differentiation capacities including osteoblasts, chondrocytes, and adipocytes. Studies also identified MSCs' differentiation capacity towards neuronal cell [27]. However, their differentiation efficiency varies during specific lineage differentiation for tissue regeneration [29]. MSCs' differentiation potential is regulated by their tissue origin, through epigenetic regulations such as DNA methylation of important transcription factors. During lineage-specific differentiation studies, it appears that adult stem cells do not differentiate with the same efficacy, as the tissue-specific stem cells are generally more effective when differentiating toward their origin tissues. For instance, bone marrow-derived stem cells (BMSCs) express a higher magnitude of osteogenic genes, while adipose-derived stem cells (ADSCs) have significant upregulation of adipogenic genes after *in vitro* induction [30-32]. Therefore, in a successful clinical trial suitable tissue source selection is imperative to produce clinical-grade MSCs (Figure 1)

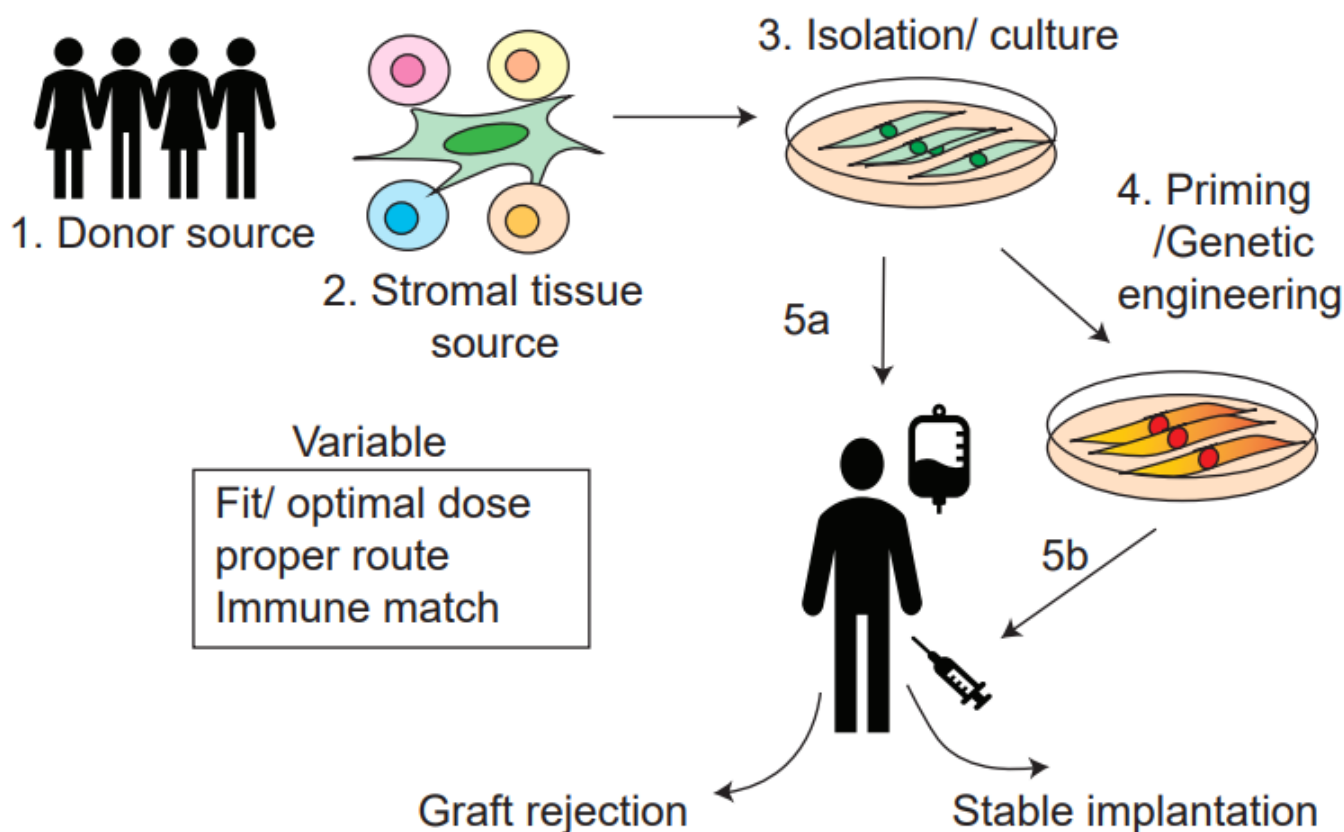


Figure 1: MSCs therapeutic efficiency depends upon donor source (1) and stromal tissue source variability (2), and Cell manufacturing process (3). Immune matching, metabolic fitness and route of delivery regulate MSCs persistence inside recipient (5). Before *in vivo* administration, chemical licensing/ genetic modification (4) is the key strategy to improve graft cell survival (5b)

Mscs' Immunogenicity

Off-the-shelf, cryobanked allogeneic MSCs propose significant logistic and cost-reductive advantages in clinical arrangement compared to their autologous counterpart. However, to reach the efficacy endpoint, major pre-clinical mouse data support the use of syngeneic MSCs [5].

Since MSCs express low levels of MHC class I molecules on their surface and lack the expression of MHC class II, previously MSCs were considered “immunoprivileged” [33]. Moreover, in early studies, researchers identified that allogeneic MSCs significantly delay the proliferation of MHC-mismatched lymphocytes in *in vitro* mixed leukocyte reactions (MLR) [34]. Therefore, in clinical trials, mass-produced MSCs from a few donors were extensively used to treat allogeneic unrelated recipients for a range of diseases, without concern for immune rejection. However, recent studies showed the antibody production against and immune rejection of allogeneic donor MSCs [35,36], raising the question of employing MSCs as the universal donor. Us-

ing a mouse model of Colitis, current findings identified that the administration of both allogeneic and syngeneic MSCs can improve the disease following the first course of treatment. However, like syngeneic MSCs, allogeneic MSCs are impotent to maintain sustained responsiveness in relapsing colitis [5]. Indeed, allogeneic MSCs protect themselves from immune detection, in some cases, where they exert their therapeutic activity through a brief “hit and run” mechanism. This is possible in some cases where persistence is dispensable to exert its therapeutic effect [33]. Collective evidence indicates that allogeneic MSCs are the only reasonable deployment strategy for use in acute tissue injury syndromes such as stroke, sepsis, or myocardial infarction, where the delays in manufacturing autologous MSCs would forfeit their efficiency in affecting outcomes. Nonetheless, in chronic degenerative disorders where repeated long-term infusions are necessary to maintain MSCs therapeutic benefit, there would be a bias in favor of the syngeneic (autologous) MSCs [5]. Despite the immunogenic nature of allo-MSCs, clinical studies often rely of cryopreserved allogeneic

cells because of the donor related issues (age or disease state of patient) and in the need of low-cost immediate care [37]. Hence cell modification approaches to avoid allo-rejection and alleviate transplantation shock would be beneficial to improve MSCs therapeutic utility in clinical trials (Figure 1).

MSCs Administration Routes

MSCs delivery route is one of the critical parameters that can dictate an effective and safe therapeutic outcome [6]. Though plenty of pre-clinical and clinical trials are attempting to optimize specific routes of delivery (Table 2), presently there is no consensus on the optimal MSCs delivery method in human clinical trials. Clinical trials frequently select the cost-effective and convenient intravenous transfusion method, though their therapeutic outcome shows variable effectiveness [5]. Depending on the treatment requirement, MSCs can be implanted through local and systemic administration.

Systemic Administration

Intravenous (IV) Injection

Advantages: This route is the major approach for systemic MSCs' delivery. IV delivery is considered the conventional and safe approach in human clinical trials. According to a recent survey of human MSC clinical trials, >40% of studies implant a median of 100 million MSCs IV for a wide range of clinical disorders [5].

Disadvantage: Nevertheless, a plurality of reports identified that the IV-transfused MSCs are trapped in lungs, which are cleared shortly afterward. Since the paracrine functions support MSCs' therapeutic activity, reduced lifespan of grafted cells debilitates their therapeutic activity. A recent mouse preclinical study identified that repeated IV delivery of maximally tolerated dose (50 million cells/kg body weight) of fit MSCs failed to affect colitis clinical outcomes [5]. On the contrary, a research group identified the beneficial effect of intravenously transfused mouse MSCs in reduction of lethal sepsis. They explained this event by the process of efferocytosis, where more than half of lung-trapped MSCs is rapidly phagocytosed by lung-resident tissue macrophages. Production of interleukin-10 (IL-10) by

phenotypically altered macrophages reduce tissue inflammation [38]. A similar study identified the role of IP/IV delivered apoptotic MSCs in improvement of mouse Graft-versus-host disease (GVHD) outcomes, which is mediated by the interaction with host phagocytic cells and a secondary efferocytotic response [39]. Repeated IV administration of adipose derived MSCs into diabetic rat, reduced kidney damage and induced the secretion of glial cell-derived neurotrophic factor to recover podocyte [40].

Intra-arterial (IA) Injection

Advantage: Compare to intravenous, intra-arterial (IA) approach is more efficient as it reduces cell-trapping in the lungs and induces engrafted cell migration at the target tissue injury site [41].

Disadvantage: Intriguingly, few studies identified adverse effect associated with IA delivery of MSCs. Though IA injection is preferable route for efficient cell targeting to the brain, recent survey identified probable risk of cerebral infarcts associated with IA delivery of MSCs for stroke. Hence, for optimal use of IA approach, cell size, cell dose and infusion speed must be carefully considered [42].

Intra-peritoneal (IP) or Subcutaneous (SC)

Though intra-peritoneal (IP) or subcutaneous (SC) delivery is not frequently used in clinical trial like IV route, preclinical studies identified their therapeutic utility in various disease recovery. IP delivered MSCs-condition media in a rat model of vaginal distention injury, recovered urethral sphincter function through increasing leak point pressure [43]. A recent study identified that maximum tolerated IV bolus of MSCs fail to improve toxic colitis in mice, whereas SC or IP delivered MSCs show significant effect on colitis clinical and pathologic endpoints [5].

Local Administration

Advantage: Local administration of MSCs is intended to increase the engraftment of therapeutic cells at the target sites for immediate generation of local action or differentiation into the functional cells. Topical approach of MSCs delivery has identified as least invasive method and is efficacious in case of wound healing, and skin graft survival in burn or diabetic-related wounds, and also to repair injury

in solid organs and their related tissues, such as heart, brain, spinal tissue, liver etc [44].

Intra-muscular infusion (IM), like IV delivery route, is also considered as the minimally invasive and simple route of MSCs delivery. Additionally, IM route promotes prolonged survival of implanted MSCs compare to other conventional routes, which is supportive of improved therapeutic outcomes [45]. In the study by Mao et al. IM transfusion of human umbilical cord MSCs in a rat model of dilated cardiomyopathy led to improved cardiac function [46]. In a separate study by Wang et al., the combination of small gap neurorrhaphy and bone marrow derived MSCs transfusion through IM injection in a rat model of peripheral nerve injury showed significant improvement of peripheral nerve regeneration and recovery of nerve function [47].

Disadvantage: Though MSCs local injection can promote improved therapeutic outcome, sometimes it causes traumatic event and its invasion may cause massive bleeding and secondary damage.

Collective evidences indicate that each delivery approach has its own advantages and restrictions. Hence route of cell delivery should be selected according to the study's aim, size of the target organ, and animal models to be used.

Optimal Timing/ Dose/ Fitness of MSCs

Time: The optimal cell delivery timing is imperative in maximizing MSCs clinical effect, as it regulates the survival time of engrafted cells. Comparative study is needed to optimize the time of MSCs delivery at the three phases of the tissue or organ healing process: i.e., injury phase (hours), repair phase (days), and remodeling phase (weeks) before any successful clinical trial [48]. The cytotoxic environment at the acute injury phase of myocardial infarction, diminish the functional property of transplanted MSCs [49]. Whereas, stem cell delivery at the repair phase i.e., 4 to 7 days after acute myocardial infarction, showed maximal therapeutic benefits [50]. MSCs delivery within two hours and one week of thoracic irradiation resulted in beneficial outcomes in the treatment of Radiation-induced lung fibrosis (RILF) through anti-inflammation in the pneumonitic phase and anti-fibrosis during the whole lung injury period [51].

Similarly, MSCs transplantation 3 or 10 days post-neonatal hypoxic ischemic injury exhibited maximal improvements in motor behavior, however administration at 17 days showed significantly lower therapeutic effect.

Dose: Number of delivered MSCs is an essential factor that can be modified to achieve optimal therapeutic benefit. The appropriate number of transplanted MSCs depends upon type of organ, tissue, and animal species. For instance, large number of cells in a single treatment may not always bias to positive therapeutic outcome. A very high dose of intravenously transplanted cells may cause blockages in the capillaries of the lungs, results in poor therapeutic effect [52]. On the contrary, according to the report of <http://clinicaltrials.gov/>, the IV route possesses the highest average MSCs dose, trapping the transplanted cells in the lungs is the possible reason of this highest dose (PMID: 31804767).

In clinical trial optimal dose range identified for treating spinal injury patient is, 0.5×10^6 - 5×10^6 MSCs/kg body weight of the recipient [53]. Also, in some cases, repeated long-term infusion at certain intervals seems to stimulate the positive outcome. Although intravenous transfusion of MSCs is the safest mode, the major disadvantage is the limitation of maximum amount of delivered cells, which differs with the rodent model. In rodent, the optimal cell concentration is 50M/Kg for intravenous transplantation, whereas in case of human the optimal dose is 1-2M/Kg body weight. This species-specific variation of MSCs dosing, would prognosticate a negative bias in outcomes for humans if the functioning biological mechanisms are comparable between species and are dose-dependent [6].

Fitness: Various preclinical mechanistic studies established that the MSCs exert a local and systemic immunosuppressive effect via the release of multiple paracrine soluble factors. Since metabolic fitness is essential for paracrine functionality, the major animal studies utilize culture rescued, log phase MSCs with optimal metabolic fitness and high replication capacity. However, human clinical trials often use pre-banked cryopreserved allogeneic MSCs thawed immediately and infused at the point of care. Importantly, in the first 24 h following recovery from cryostorage, MSCs express different cell injury markers. Previous studies

identified that immediate post-thawed MSCs show defective immune functionality [1], increased susceptibility to lysis by host T cells, and short-term *in vivo* persistence [54,55]. In a murine model of Colitis, short *in vivo* persistence of post-thawed MSCs led to impaired cell-dependent functionality⁵. Besides, human clinical trials regularly use an industrial-scale expansion of MSCs. Emerging studies identified that prolonged culture expansion of MSCs leads to replicative exhaustion/senescence and impairment of immunosuppressive ability [56]. In supporting this notion, researchers identified that the late passage MSCs are clinically

less effective in mitigating GVHD than early passage cells [57,58]. Hence collective evidence indicates that metabolic fitness is one of the primary factors responsible for the disparity in interspecies outcomes. The development of strategies to reduce cellular senescence or rescue MSCs from cryoinjury would improve MSCs clinical application. Interestingly, metabolically unfit MSCs after exposing to stimulatory cues may regain their fitness. Chinnadurai et al. demonstrated that IFN γ prelicensing stimulated multiple immunomodulatory genes in senescent MSCs and significantly improve senescent MSCs' immunosuppressive effect (PMID: 28713871).

Table 2: MSCs pre-clinical and clinical application

Therapeutic area	Administration route	MSCs source	Dose	Model system	Results obtained
Rheumatoid arthritis	Intraperitoneal	Human adipose-derived MSCs	10 ⁶ MSCs each day along 5 days	Mouse preclinical animal model [59]	Reduce self-reactive T effector responses and induce Treg cells proliferation.
Autoimmune type 1 diabetes	Tail vein	Murine bone marrow-derived MSCs	5 × 10 ⁵ MSCs once a week for 4 weeks	Mouse preclinical animal model [60]	Reduce self-reactive T effector responses and induce Treg cells proliferation
Myocardial infarction	Monolayered MSCs transplantation	Rat adipose-derived MSCs	9.4 ± 0.6 × 10 ⁵ monolayered MSCs transplanted with dermal fibroblasts	Rat preclinical animal model [61]	Reversed wall thinning in the scar area and improved cardiac function in rats with myocardial infarction.
Acute lung injury	Tail vein	Murine bone marrow-derived MSCs	2 × 10 ⁶ MSCs for a week	Mouse preclinical animal model [62]	Inhibition of Th2-mediated allergic airway inflammation
GVHD	Systemic infusion	Allogeneic bone marrow-derived MSCs	2 × 10 ⁶ ; 8 × 10 ⁶ hMSCs/kg	Phase II clinical trial [63]	MSCs treated group showed lesser GVHD response without infusional toxicities or ectopic tissue formations
Myocardial infarction	Systemic infusion	Allogeneic bone marrow-derived MSCs	0.5 × 10 ⁶ ; 1.6 × 10 ⁶ ; 5.0 × 10 ⁶ hMSCs/kg	Phase I clinical trial [64]	MSCs transplanted patient group showed enhanced lung function.

Liver cirrhosis	Systemic infusion	Autologous bone marrow-derived MSCs	4.0×10^7 (total hMSCs per time injection)	Phase I–II clinical trial [65]	MELD score, prothrombin complex, and serum creatinine level lessened; serum albumin level improved. Limitation of the study: MSCs could not be traced after transplantation.
Amyotrophic Lateral Sclerosis (ALS)	Combined intramuscular and intrathecal route of delivery	Autologous bone marrow-derived MSCs	1×10^6 cells/kg intrathecal and 24×10^6 cells intramuscular; 1.5×10^6 cells/kg intrathecal and 36×10^6 cells intramuscular; and 2×10^6 cells/kg intrathecal and 48×10^6 cells intramuscular	Phase II clinical trial [66]	Slow up disease progression rate. Limitation of the study: size of study group is low.

Improvement of MSCs Application in Tissue Injury

MSCs secrete a plethora of cytokines, chemokines which reduces inflammation via augmenting anti-inflammatory T-regulatory cell (Treg) function, alternatively activated M2 macrophage polarization and reducing effector lymphoid cell function. MSCs also secrete morphogens and exosomes which endorse tissue regeneration.

MSCs gained popularity because of their powerful intrinsic properties of self-regeneration, immunomodulation and multi-potency, ready availability, easy isolation and culture expansion.

MSCs therapeutic potential is attributed to their capacity to undergo lineage-specific differentiation, immune modulatory and regenerative response. After *in vivo* transplantation, MSCs confront adverse microenvironment of injured tissue, such as oxidative stress, chronic inflammation, extracellular matrix degradation, which promotes apoptosis or rejection of graft MSCs. Genetic modification or preconditioning approaches have been extensively studied to improve MSCs *in vivo* persistence and therapeutic utility.

One of the key features of adoptively transferred MSCs is their ability to home at tissue injury site in re-

sponse to chemokine gradient. In this multistep process, MSCs surface chemokine receptor, CXCR4 or CXCR7, serves as specific receptor for stromal cell-derived factor 1 (SDF-1), which is one of the most powerful chemokines involved in cellular migratory processes [67]. It has been identified that the overexpression of CXCR4/CXCR7 in the adipose tissue-derived MSCs, endorses their paracrine, proliferative and migratory abilities, which has further potent therapeutic impact in liver regeneration and rat renal transplantation [68,69]. Optimum adhesion of the transplanted MSCs is the primary contributor to cell engraftment and tissue/organ regeneration, where detachment causes anoikis. Cellular adhesion is associated with the function of integrins, which regulates cell extracellular matrix (ECM) and cell–cell adhesion mechanisms via the binding of ECM with adhesion molecules [70]. Integrin-linked kinase (ILK) overexpression in MSCs induced cell survival and hence improved myocardial damage recovery, when transplanted into an ischemic myocardium model. ILK-overexpression also leads to rapid angiogenesis through AKT and mTOR signaling pathways in an infarcted myocardium [71]. Since in *in vivo* condition, MSCs thrive to low oxygen tension environment, one classical method of enhancing the migratory, proliferative and therapeutic functionality of MSCs is hypoxic preconditioning. Studies identified that, in murine hind-limb is-

chemia model, hypoxia preconditioned (2% O₂) MSCs show better proliferation and migration effect through elevated expression of heat shock protein, 78-kD glucose-regulated protein (GRP78) [72].

Immunosuppressive Property

Different approaches like cytokine pre-licensing or genetic modification, have been identified to amplify the immunosuppressive effect of MSCs. Priming MSCs with TL-R3 ligand Poly (I:C), enhanced the therapeutic activity of MSCs in TNBS induced colitis, through the production of immunosuppressive molecule PGE₂ [73]. Administration of (TNF α /IL1b)-prelicensed MSCs in rat cornea transplant model, promoted immune-regulatory CD11b+B220+ monocyte/macrophage population and significantly increased Treg cells in the lungs and spleen [74]. In a study by François et al. it was identified that the simultaneous treatment of MSCs with TNF- α and IFN- γ leads to increased production of IDO, which contributes in the differentiation of CD14+ monocytes into IL-10 producing anti-inflammatory CD206+ M2 macrophages [75]. MSCs preconditioned with IL-1b produce enhanced level of immunomodulatory cytokines such as TNF- α , IL-6, IL-8 and IL-23A and chemokines such as CCL5, CCL20, CXCL1, CXCL3, CXCL5, CXCL6, CXCL10, and CXCL11. Additionally, IL1b prelicensing improved MSCs ability to recruit neutrophils, monocytes, lymphocytes, and eosinophils in vitro [76].

Cellular Senescence and Graft Survival

After in vivo transplantation, the harsh microenvironment of host tissue often leads to premature death or cellular senescence of MSCs, followed by reduced MSCs' functions. Graft survival can be improved by genetically modifying the cells with overexpressing Integrin-linked kinase (ILK) in MSCs via activation of AKT and mTOR signaling pathways in an infarcted myocardium [71]. MSCs overexpressing Hepatocyte growth factor (HGF) or Hypoxia-inducible factor 1 α (HIF1A), also reported to have an anti-apoptotic effect and hence high therapeutic impact in several disease recovery [77-79]. Prevention of senescence is another MSCs modification approach that can arrest irreversible cellular proliferation and improve MSCs' therapeutic functionality. Intriguingly, overexpressing human Oct4 and Sox2 into adipose MSCs enhances cellular stemness and prolifera-

tion capacity [80]. In a separate study, telomerase reverse transcriptase (TERT) transfection was identified as an effective way to delay MSCs senescence by inducing higher proliferative and cell cycle-related gene expression factors [81], and also improve neural and osteogenic lineages proliferation [82,83]. IFN- γ stimulation is also identified as a cell apoptosis-prevention approach, which protects MSCs from NK cell-mediated cytotoxicity in vitro [84].

Strategies to Prolong allo-MSCs' Persistence

Since preclinical studies identified a direct correlation between MSCs persistence and therapeutic efficacy [5], approaches that prevent allo-rejection and extend MSCs persistence would be a demanding tool in clinical research. Modifying host or transplanted MSCs is the possible way to avoid Allo-MSCs rejection. Administering specific doses of immunosuppressive drugs with allo-MSCs, is the most well-studied approach to prevent graft rejection. In a cardiac allograft mouse model, combinative therapy of low-dose rapamycin with MHC-mismatched allo-MSCs was found to be effective in the long-term persistence of MSCs and tolerance (100 days) of a heart graft of MSC donor origin [85]. Strategically suppressing the MHC class I surface expression using viral immunoevasins is the other method of immunogenicity reduction and boosting MSCs in vivo persistence [86]. Deletion of MHC class II surface expression was advantageous for allo-MSCs persistence. Though MSCs express low MHC II surface antigen, in vitro or in vivo differentiation of MSCs triggered increased MHC II expression, inducing a transition from immune privileged to immunogenic phenotype. Researchers developed immunoprivileged MSCs by knocking out Class II transactivator (CIITA), a known regulator of MHC II expression. CIITA knock-out MSCs did not reject after transplantation into the myocardium, followed by myocardial repair [87].

Importance of in vitro Potency Assay

Advanced clinical trial mandates MSCs' identity and potency assay to measure their therapeutic utility. This functionality test ensures the quality or effectiveness of each of the MSCs manufactured lots, which are diverse at the level of cell source and manufacturing process [6,88]. MSCs secrete a plurality of immunomodulatory and regenerative molecules in response to *in vivo* environmental cues.

Hence, the major challenge of developing the assay matrix approach is identifying the combination of factors critical for MSCs' regenerative functionality in humans. According to the International Society for Cell Therapy (ISCT), the assay matrix approach should capture the aggregate of effector pathways significant to MSCs immunomodulation, regeneration, and homing properties [89]. The regenerative functionality of donor MSCs partially depends upon host immune cells-mediated licensing process. Hence, investigation of the interaction between donor MSCs and recipient leukocytes, may serve as a surrogate measure of potency. Obeying the declaration of ISCT, recently an assay matrix approach has been developed, which is able to test two assay systems to quantify the potency of human MSCs: MSCs secretome analysis and a quantitative RNA-based array for specific genes responsible for immunomodulatory and homing properties of MSCs [90].

Although plenty of studies are involved in developing effective MSCs' potency assay, more effort is needed to formulate approaches that can define and simplify the multifunctional or matrix responses of MSCs and serve as a platform for robust potency analysis.

Future Research Directions

A successful MSCs-based clinical trial relies on MSCs' intrinsic functionality, such as MSCs' homing property, effective differentiation, proliferation, and application of paracrine or endocrine influences. Tissue source, metabolic fitness, dosages, and delivery route are the focal regulatory factors that maintain MSCs intrinsic functionality.

For an effective and safe MSCs-based clinical trial, it is pivotal to understand the molecular mechanism of the cross-talk between host immune cells and the MSCs-derived secretomes. The technical knowledge derived from the successful MSC-based ADMIRE CD clinical trial will increase MSCs' clinical utility. However, more studies

are needed to gain an in-depth understanding of mechanism of action and the biological properties of MSCs, collected by different manufacturing processes to enhance their therapeutic potency. Knowledge of proper selection of optimal cell delivery route, timing, and dosing is pivotal to improve MSCs survival and overall function. Tracking method also needs to be developed to chase MSCs *in vivo* existence, since this is crucial to determine MSCs transplantation parameters, such as delivery dose and route. Currently bioluminescence imaging is the only established method for small animal imaging. Establishment of a standard cell tracking method for large animal including human subject is urgently required.

Additionally, for further progression, methods that combine optimal delivery, dosages, preconditioning, and tracking should be explored in varying inflammatory disease models that currently lack effective treatment. Emphasis should be placed on developing different gene modification strategies to enhance the effect of aged MSCs by targeting age related signaling pathways, reactive Oxygen species and autophagy factors.

Acknowledgments

Laboratory space and institutional support from Dr. Geetanjali Sachdeva and Dr. Deepak Modi. A funding from DBT/Wellcome Trust India Alliance Early career fellowship to J.G.

Authors Contributions

J.G conceived the idea, wrote the paper, revised, and proofread the paper.

Funding

This work is supported by funding from the DBT/Wellcome Trust India Alliance Early career fellowship to J.G. Reference number: IA/E/21/1/506272

References

1. Francois M. et al. (2012) Cryopreserved mesenchymal stromal cells display impaired immunosuppressive properties as a result of heat-shock response and impaired interferon-gamma licensing. *Cytotherapy*, 14: 147-52.
2. Wang Y, Chen X, Cao W, Shi Y (2014) Plasticity of mesenchymal stem cells in immunomodulation: pathological and therapeutic implications. *Nature immunology*, 15: 1009-16,
3. Lazarus HM, Haynesworth SE, Gerson SL, Rosenthal NS, Caplan, AI (1995) Ex vivo expansion and subsequent infusion of human bone marrow-derived stromal progenitor cells (mesenchymal progenitor cells): implications for therapeutic use. *Bone marrow transplantation*, 16: 557-64.
4. Mastrolia I. et al. (2019) Challenges in Clinical Development of Mesenchymal Stromal/Stem Cells: Concise Review. *Stem cells translational medicine*, 8: 1135-48.
5. Giri J, Galipeau J (2020) Mesenchymal stromal cell therapeutic potency is dependent upon viability, route of delivery, and immune match. *Blood advances*, 4: 1987-97,
6. Galipeau J, Sensebe L (2018) Mesenchymal Stromal Cells: Clinical Challenges and Therapeutic Opportunities. *Cell stem cell*, 22: 824-33.
7. Galipeau J. et al. (2021) Mesenchymal stromal cell variables influencing clinical potency: the impact of viability, fitness, route of administration and host predisposition. *Cytotherapy*, 23: 368-72.
8. Giri J, Modi D (2023) Endometrial and placental stem cells in successful and pathological pregnancies. *Journal of assisted reproduction and genetics*, 40: 1509-22,
9. Ciccocioppo R. et al. (2015) Long-Term Follow-Up of Crohn Disease Fistulas After Local Injections of Bone Marrow-Derived Mesenchymal Stem Cells. *Mayo Clinic proceedings*, 90: 747-55,
10. Dhere T. et al. (2016) The safety of autologous and metabolically fit bone marrow mesenchymal stromal cells in medically refractory Crohn's disease - a phase 1 trial with three doses. *Alimentary pharmacology & therapeutics*, 44: 471-81.
11. Forbes GM. et al. (2014) A phase 2 study of allogeneic mesenchymal stromal cells for luminal Crohn's disease refractory to biologic therapy. *Clinical gastroenterology and hepatology : the official clinical practice journal of the American Gastroenterological Association*, 12: 64-71.
12. Giri J, Das R, Nysten E, Chinnadurai R, Galipeau J (2020) CCL2 and CXCL12 Derived from Mesenchymal Stromal Cells Cooperatively Polarize IL-10+ Tissue Macrophages to Mitigate Gut Injury. *Cell reports*, 30: 1923-34.
13. Ball LM. et al. (2013) Multiple infusions of mesenchymal stromal cells induce sustained remission in children with steroid-refractory, grade III-IV acute graft-versus-host disease. *British journal of haematology*, 163: 501-9,
14. Kurtzberg J. et al. (2014) Allogeneic human mesenchymal stem cell therapy (remestemcel-L, Prochymal) as a rescue agent for severe refractory acute graft-versus-host disease in pediatric patients. *Biology of blood and marrow transplantation: journal of the American Society for Blood and Marrow Transplantation*, 20: 229-35,
15. Mohyeddin Bonab M. et al. (2007) Does mesenchymal stem cell therapy help multiple sclerosis patients? Report of a pilot study. *Iranian journal of immunology: IJI* 4: 50-7.
16. Yamout B. et al. (2010) Bone marrow mesenchymal stem cell transplantation in patients with multiple sclerosis: a pilot study. *Journal of neuroimmunology*, 227: 185-9,
17. Connick P. et al. (2012) Autologous mesenchymal stem cells for the treatment of secondary progressive multiple sclerosis: an open-label phase 2a proof-of-concept study. *The Lancet. Neurology*, 11: 150-6.
18. Schlosser S. et al. (2012) Paracrine effects of mesenchymal stem cells enhance vascular regeneration in ischemic murine skin. *Microvascular research*, 83: 267-75.
19. Gu W, Hong X, Potter C, Qu A, Xu Q (2017) Mesenchymal stem cells and vascular regeneration. *Microcirculation*, 24.
20. Schweizer R. et al. (2014) Bone marrow-derived mes-

enchymal stromal cells improve vascular regeneration and reduce leukocyte-endothelium activation in critical ischemic murine skin in a dose-dependent manner. *Cytotherapy*, 16: 1345-60.

21. Watt SM. et al. (2013) The angiogenic properties of mesenchymal stem/stromal cells and their therapeutic potential. *British medical bulletin*, 108: 25-53.

22. Wang X. et al. (2019) Efficient lung cancer-targeted drug delivery via a nanoparticle/MSC system. *Acta pharmaceutica Sinica. B*, 9: 167-76.

23. Bagheri E. et al. (2020) Targeted doxorubicin-loaded mesenchymal stem cells-derived exosomes as a versatile platform for fighting against colorectal cancer. *Life sciences*, 261: 118369,

24. Bonomi A. et al. (2015) Gemcitabine-releasing mesenchymal stromal cells inhibit in vitro proliferation of human pancreatic carcinoma cells. *Cytotherapy*, 17: 1687-95.

25. Abd-Allah SH. et al. (2013) Mechanistic action of mesenchymal stem cell injection in the treatment of chemically induced ovarian failure in rabbits. *Cytotherapy*, 15: 64-75.

26. Falanga V. et al. (2007) Autologous bone marrow-derived cultured mesenchymal stem cells delivered in a fibrin spray accelerate healing in murine and human cutaneous wounds. *Tissue engineering*, 13: 1299-312.

27. Ullah I, Subbarao RB, Rho GJ (2015) Human mesenchymal stem cells - current trends and future prospective. *Bioscience reports*, 35.

28. Fernandez Vallone VB. et al. (2013) Mesenchymal stem cells and their use in therapy: what has been achieved? *Differentiation; research in biological diversity*, 85: 1-10.

29. Szala S, Wisniewska E, Czapla J (2014) [Mesenchymal stromal cells]. *Advances in hygiene and experimental medicine*, 68: 1287-98.

30. Xie L. et al. (2013) In vitro mesenchymal trilineage differentiation and extracellular matrix production by adipose and bone marrow derived adult equine multipotent stromal cells on a collagen scaffold. *Stem cell reviews and reports*, 9: 858-72.

31. Peiffer I. et al. (2007) A sub-population of high proliferative potential-quiescent human mesenchymal stem cells is under the reversible control of interferon alpha/beta. *Leukemia*, 21: 714-24.

32. Addison WN. et al. (2014) Direct Transcriptional Repression of Zfp423 by Zfp521 Mediates a Bone Morphogenic Protein-Dependent Osteoblast versus Adipocyte Lineage Commitment Switch. *Molecular and cellular biology*, 34: 3076-85.

33. Ankrum JA, Ong JF, Karp JM (2014) Mesenchymal stem cells: immune evasive, not immune privileged. *Nature biotechnology*, 32: 252-60.

34. Le Blanc K, Tammik C, Rosendahl K, Zetterberg E, Ringden O (2003) HLA expression and immunologic properties of differentiated and undifferentiated mesenchymal stem cells. *Experimental hematology*, 31: 890-6.

35. Schu S. et al. (2012) Immunogenicity of allogeneic mesenchymal stem cells. *Journal of cellular and molecular medicine*, 16: 2094-103.

36. Zangi L. et al. (2009) Direct imaging of immune rejection and memory induction by allogeneic mesenchymal stromal cells. *Stem cells*, 27: 2865-74.

37. Berglund AK, Fortier LA, Antczak DF, Schnabel LV (2017) Immunoprivileged no more: measuring the immunogenicity of allogeneic adult mesenchymal stem cells. *Stem cell research & therapy*, 8: 288.

38. Nemeth K. et al. (2009) Bone marrow stromal cells attenuate sepsis via prostaglandin E(2)-dependent reprogramming of host macrophages to increase their interleukin-10 production. *Nature medicine*, 15: 42-9.

39. Cheung TS. et al. (2020) Mesenchymal Stromal Cells for Graft Versus Host Disease: Mechanism-Based Biomarkers. *Frontiers in immunology*, 11: 1338.

40. Rivera FJ, Aigner L (2012) Adult mesenchymal stem cell therapy for myelin repair in multiple sclerosis. *Biological research*, 45: 257-68.

41. Mangera A, Chapple CR (2013) Tissue engineering in urethral reconstruction--an update. *Asian journal of an-*

- drology, 15: 89-92.
42. Caplan H. et al. (2019) Mesenchymal Stromal Cell Therapeutic Delivery: Translational Challenges to Clinical Application. *Frontiers in immunology*, 10: 1645.
 43. Cai J. et al. (2014) Maximum efficacy of mesenchymal stem cells in rat model of renal ischemia-reperfusion injury: renal artery administration with optimal numbers. *PloS one*, 9: e92347.
 44. Liu S. et al. (2016) Strategies to Optimize Adult Stem Cell Therapy for Tissue Regeneration. *International journal of molecular sciences*, 17.
 45. Braid LR, Wood CA, Wiese DM, Ford BN (2018) Intramuscular administration potentiates extended dwell time of mesenchymal stromal cells compared to other routes. *Cytotherapy*, 20: 232-44.
 46. Mao C. et al. (2017) Intramuscular injection of human umbilical cord-derived mesenchymal stem cells improves cardiac function in dilated cardiomyopathy rats. *Stem cell research & therapy*, 8: 18.
 47. Wang P, Zhang Y, Zhao J, Jiang B (2015) Intramuscular injection of bone marrow mesenchymal stem cells with small gap neurotomy for peripheral nerve repair. *Neuroscience letters*, 585: 119-25.
 48. Jarvinen TA, Jarvinen M, Kalimo H (2013) Regeneration of injured skeletal muscle after the injury. *Muscles, ligaments and tendons journal*, 3: 337-45.
 49. Deten A, Volz HC, Briest W, Zimmer HG (2002) Cardiac cytokine expression is upregulated in the acute phase after myocardial infarction. *Experimental studies in rats. Cardiovascular research*, 55: 329-40.
 50. Hampel C, Wienhold D, Benken N, Eggersmann C, Thuroff JW (1997) Definition of overactive bladder and epidemiology of urinary incontinence. *Urology*, 50: 4-14.
 51. Zhang Y, Jiang X, Ren L (2019) Optimization of the adipose-derived mesenchymal stem cell delivery time for radiation-induced lung fibrosis treatment in rats. *Scientific reports* 9: 5589.
 52. van Koppen A et al. (2012) Healthy bone marrow cells reduce progression of kidney failure better than CKD bone marrow cells in rats with established chronic kidney disease. *Cell transplantation*, 21: 2299-312.
 53. Sharma RR, Pollock K, Hubel A, McKenna D (2014) Mesenchymal stem or stromal cells: a review of clinical applications and manufacturing practices. *Transfusion*, 54: 1418-37.
 54. Chinnadurai R. et al. (2016) Cryopreserved Mesenchymal Stromal Cells Are Susceptible to T-Cell Mediated Apoptosis Which Is Partly Rescued by IFN γ Licensing. *Stem cells*, 34: 2429-42.
 55. Moll G. et al. (2016) Cryopreserved or Fresh Mesenchymal Stromal Cells: Only a Matter of Taste or Key to Unleash the Full Clinical Potential of MSC Therapy? *Advances in experimental medicine and biology*, 951: 77-98.
 56. Sensebe L. et al. (2012) Limited acquisition of chromosomal aberrations in human adult mesenchymal stromal cells. *Cell stem cell*, 10: 9-10.
 57. Galipeau J (2013) The mesenchymal stromal cells dilemma--does a negative phase III trial of random donor mesenchymal stromal cells in steroid-resistant graft-versus-host disease represent a death knell or a bump in the road? *Cytotherapy*, 15: 2-8.
 58. von Bahr, L. et al. (2012) Long-term complications, immunologic effects, and role of passage for outcome in mesenchymal stromal cell therapy. *Biology of blood and marrow transplantation : journal of the American Society for Blood and Marrow Transplantation*, 18: 557-64.
 59. González MA, Gonzalez-Rey E, Rico L, Büscher D, Delgado M (2009) Treatment of Experimental Arthritis by Inducing Immune Tolerance With Human Adipose-Derived Mesenchymal Stem Cells. *Arthritis Rheum-Us*, 60: 1006-19.
 60. Fiorina P. et al. (2003) Immunomodulatory Function of Bone Marrow-Derived Mesenchymal Stem Cells in Experimental Autoimmune Type 1 Diabetes. *J Immunol*, 183: 993-1004.
 61. Miyahara Y. et al. (2006) Monolayered mesenchymal stem cells repair scarred myocardium after myocar-

- dial infarction. *Nature medicine*, 12: 459-65.
62. Goodwin M. et al. (2011) Bone Marrow-Derived Mesenchymal Stromal Cells Inhibit Th2-Mediated Allergic Airways Inflammation in Mice. *Stem cells*, 29: 1137-48.
63. Prasad VK. et al. (2011) Efficacy and safety of ex vivo cultured adult human mesenchymal stem cells (Prochymal) in pediatric patients with severe refractory acute graft-versus-host disease in a compassionate use study. *Biology of blood and marrow transplantation : journal of the American Society for Blood and Marrow Transplantation*, 17: 534-41.
64. Hare JM. et al. (2009) A Randomized, Double-Blind, Placebo-Controlled, Dose-Escalation Study of Intravenous Adult Human Mesenchymal Stem Cells (Prochymal) After Acute Myocardial Infarction. *J Am Coll Cardiol*, 54: 2277-86.
65. Kharaziha P. et al. (2009) Improvement of liver function in liver cirrhosis patients after autologous mesenchymal stem cell injection: a phase I-II clinical trial. *Eur J Gastroen Hepat*, 21: 1199-205.
66. Petrou P. et al. (2016) Safety and Clinical Effects of Mesenchymal Stem Cells Secreting Neurotrophic Factor Transplantation in Patients With Amyotrophic Lateral Sclerosis Results of Phase 1/2 and 2a Clinical Trials. *Jama Neurol*, 73: 337-44.
67. Li Q, Zhang A, Tao C, Li X, Jin P (2013) The role of SDF-1-CXCR4/CXCR7 axis in biological behaviors of adipose tissue-derived mesenchymal stem cells in vitro. *Biochemical and biophysical research communications*, 441: 675-80.
68. Du Z. et al. (2013) Mesenchymal stem cells overexpressing C-X-C chemokine receptor type 4 improve early liver regeneration of small-for-size liver grafts. *Liver transplantation : official publication of the American Association for the Study of Liver Diseases and the International Liver Transplantation Society*, 19: 215-25.
69. Cao Z. et al. (2013) Protective effects of mesenchymal stem cells with CXCR4 up-regulation in a rat renal transplantation model. *PloS one*, 8: e82949.
70. Lee S, Choi E, Cha MJ, Hwang KC (2015) Cell adhesion and long-term survival of transplanted mesenchymal stem cells: a prerequisite for cell therapy. *Oxidative medicine and cellular longevity*, 632902.
71. Song SW. et al. (2009) Integrin-linked kinase is required in hypoxic mesenchymal stem cells for strengthening cell adhesion to ischemic myocardium. *Stem cells*, 27: 1358-65.
72. Lee JH, Yoon YM, Lee SH (2017) Hypoxic Preconditioning Promotes the Bioactivities of Mesenchymal Stem Cells via the HIF-1alpha-GRP78-Akt Axis. *International journal of molecular sciences*, 18.
73. Qiu, Y. et al. (2017) TLR3 preconditioning enhances the therapeutic efficacy of umbilical cord mesenchymal stem cells in TNBS-induced colitis via the TLR3--Jagged-1-Notch-1 pathway. *Mucosal immunology*, 10: 727-42.
74. Murphy N. et al. (2019) TNF-alpha/IL-1beta-licensed mesenchymal stromal cells promote corneal allograft survival via myeloid cell-mediated induction of Foxp3(+) regulatory T cells in the lung. *FASEB journal : official publication of the Federation of American Societies for Experimental Biology*, 33: 9404-21.
75. Francois M, Romieu-Mourez R, Li M, Galipeau J (2012) Human MSC suppression correlates with cytokine induction of indoleamine 2,3-dioxygenase and bystander M2 macrophage differentiation. *Molecular therapy: the journal of the American Society of Gene Therapy* 20: 187-95.
76. Carrero R. et al. (2015) IL1beta induces mesenchymal stem cells migration and leucocyte chemotaxis through NF-kappaB. *Stem cell reviews and reports*, 8: 905-16.
77. Zhao L. et al. (2016) Enhanced cell survival and paracrine effects of mesenchymal stem cells overexpressing hepatocyte growth factor promote cardioprotection in myocardial infarction. *Experimental cell research*, 344: 30-9.
78. Lv, B. et al. (2017) Hypoxia inducible factor 1alpha promotes survival of mesenchymal stem cells under hypoxia. *American journal of translational research*, 9: 1521-9.

79. Lv B. et al. (2017) Hypoxia-inducible factor 1 α protects mesenchymal stem cells against oxygen-glucose deprivation-induced injury via autophagy induction and PI3K/AKT/mTOR signaling pathway. *American journal of translational research*, 9: 2492-9.
80. Han SM. et al. (2014) Enhanced proliferation and differentiation of Oct4- and Sox2-overexpressing human adipose tissue mesenchymal stem cells. *Experimental & molecular medicine*, 46: e101.
81. Lee HJ. et al. (2014) Changes in PTTG1 by human TERT gene expression modulate the self-renewal of placenta-derived mesenchymal stem cells. *Cell and tissue research*, 357: 145-57.
82. Tsai CC et al. (2010) Overexpression of hTERT increases stem-like properties and decreases spontaneous differentiation in human mesenchymal stem cell lines. *Journal of biomedical science*, 17: 64.
83. Saeed H. et al. (2015) Telomerase activity promotes osteoblast differentiation by modulating IGF-signaling pathway. *Biogerontology*, 16: 733-45.
84. Noone C, Kihm A, English K, O'Dea S, Mahon BP (2013) IFN- γ stimulated human umbilical-tissue-derived cells potently suppress NK activation and resist NK-mediated cytotoxicity in vitro. *Stem cells and development*, 22: 3003-14.
85. Ge W. et al. (2009) Infusion of mesenchymal stem cells and rapamycin synergize to attenuate alloimmune responses and promote cardiac allograft tolerance. *American journal of transplantation: official journal of the American Society of Transplantation and the American Society of Transplant Surgeons*, 9: 1760-72.
86. de la Garza-Rodea AS. et al. (2011) Exploitation of herpesvirus immune evasion strategies to modify the immunogenicity of human mesenchymal stem cell transplants. *PloS one*, 6: e14493.
87. Huang XP. et al. (2016) Class II transactivator knock-down limits major histocompatibility complex II expression, diminishes immune rejection, and improves survival of allogeneic bone marrow stem cells in the infarcted heart. *FASEB journal : official publication of the Federation of American Societies for Experimental Biology*, 30: 3069-82
88. Galipeau J. et al. (2016) International Society for Cellular Therapy perspective on immune functional assays for mesenchymal stromal cells as potency release criterion for advanced phase clinical trials. *Cytotherapy*, 18: 151-9.
89. Galipeau J. et al. (2016) International Society for Cellular Therapy perspective on immune functional assays for mesenchymal stromal cells as potency release criterion for advanced phase clinical trials. *Cytotherapy*, 18: 151-9.
90. Chinnadurai R. et al. (2018) Potency Analysis of Mesenchymal Stromal Cells Using a Combinatorial Assay Matrix Approach. *Cell reports*, 22: 2504-17.

Submit your manuscript to a JScholar journal and benefit from:

- ¶ Convenient online submission
- ¶ Rigorous peer review
- ¶ Immediate publication on acceptance
- ¶ Open access: articles freely available online
- ¶ High visibility within the field
- ¶ Better discount for your subsequent articles

Submit your manuscript at
<http://www.jscholaronline.org/submit-manuscript.php>